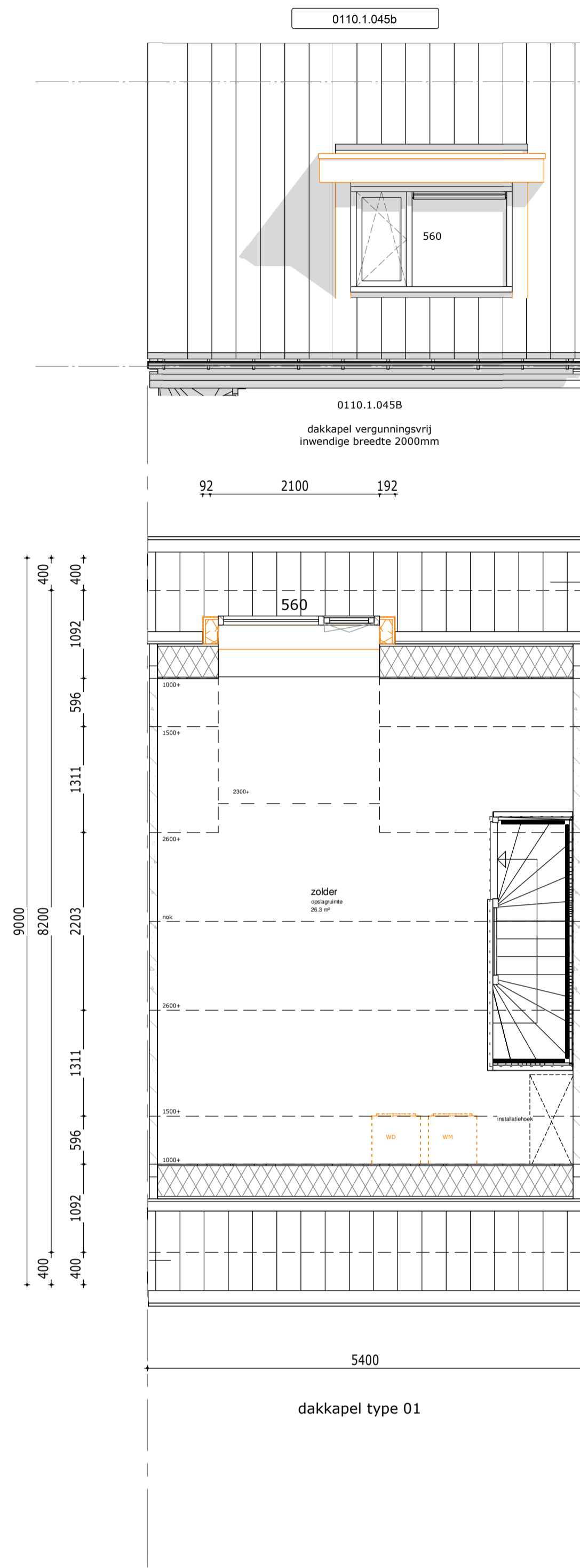
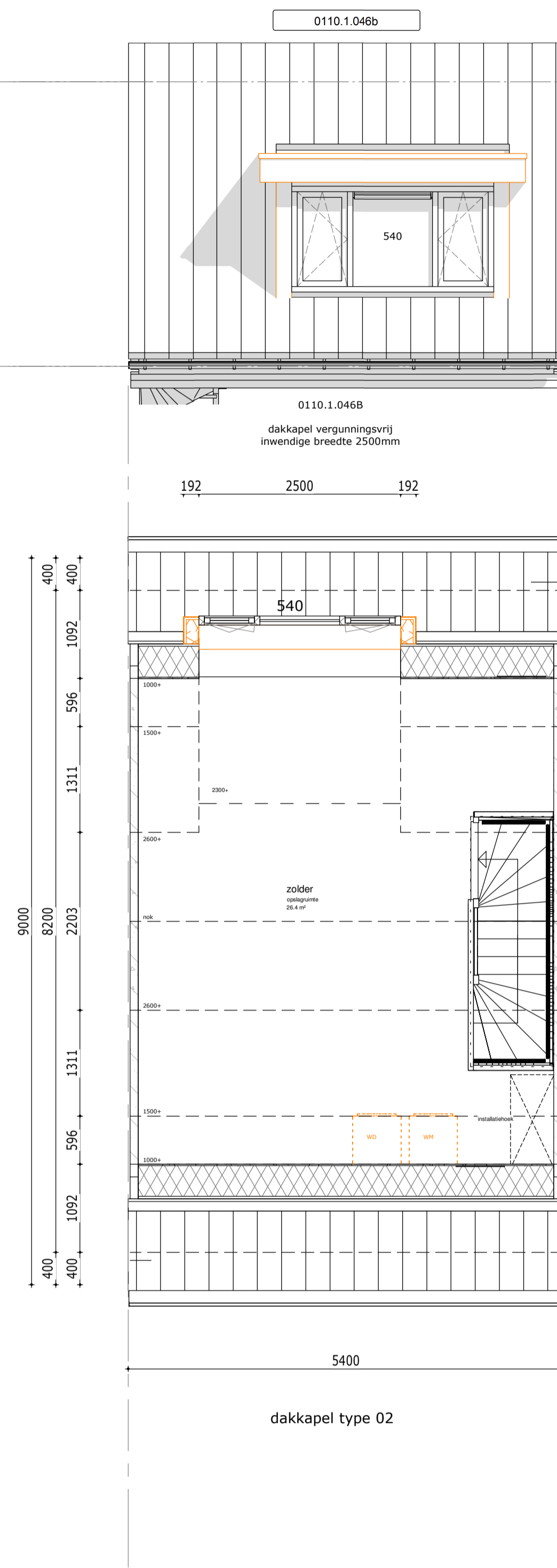


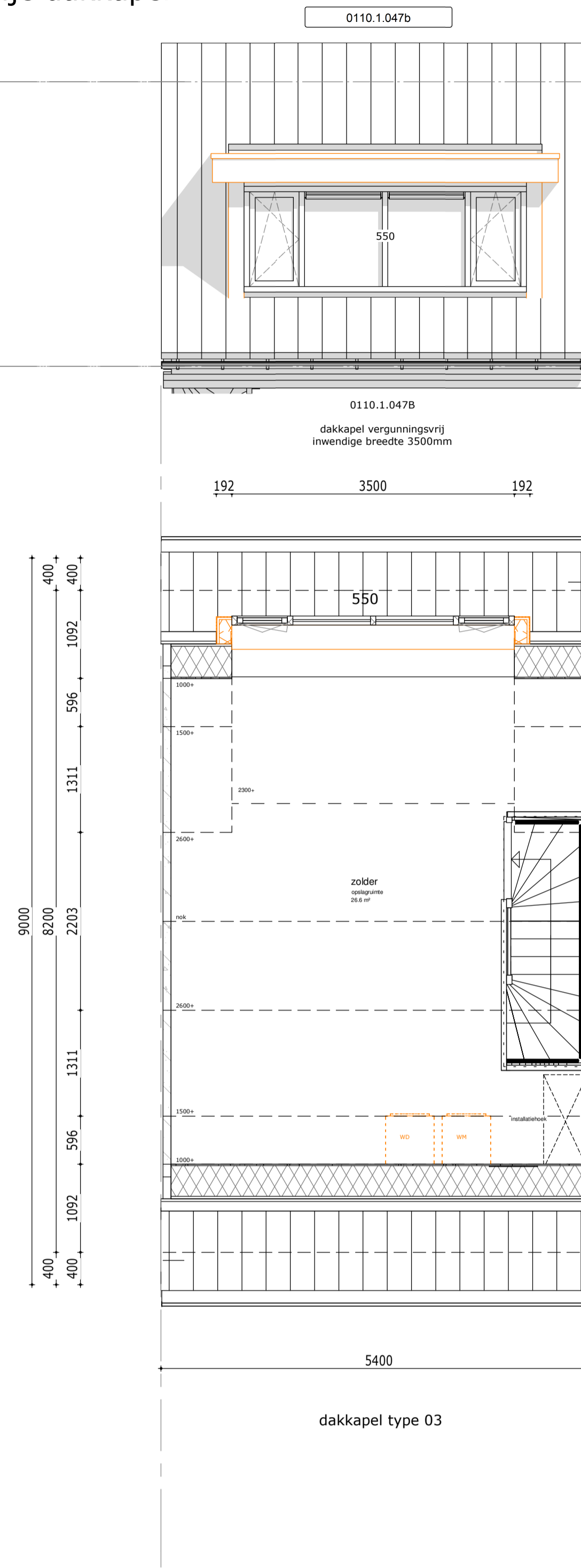
vergunningsvrije dakkapel



dakkapel type 01



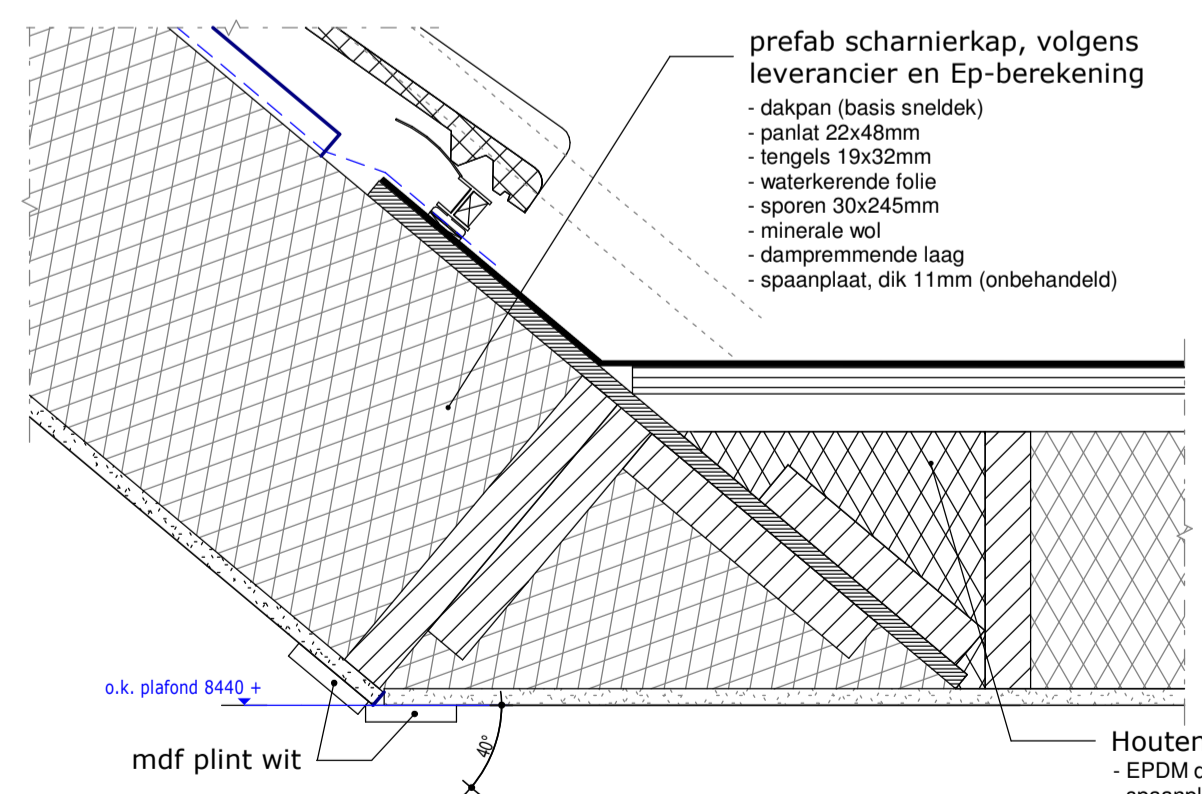
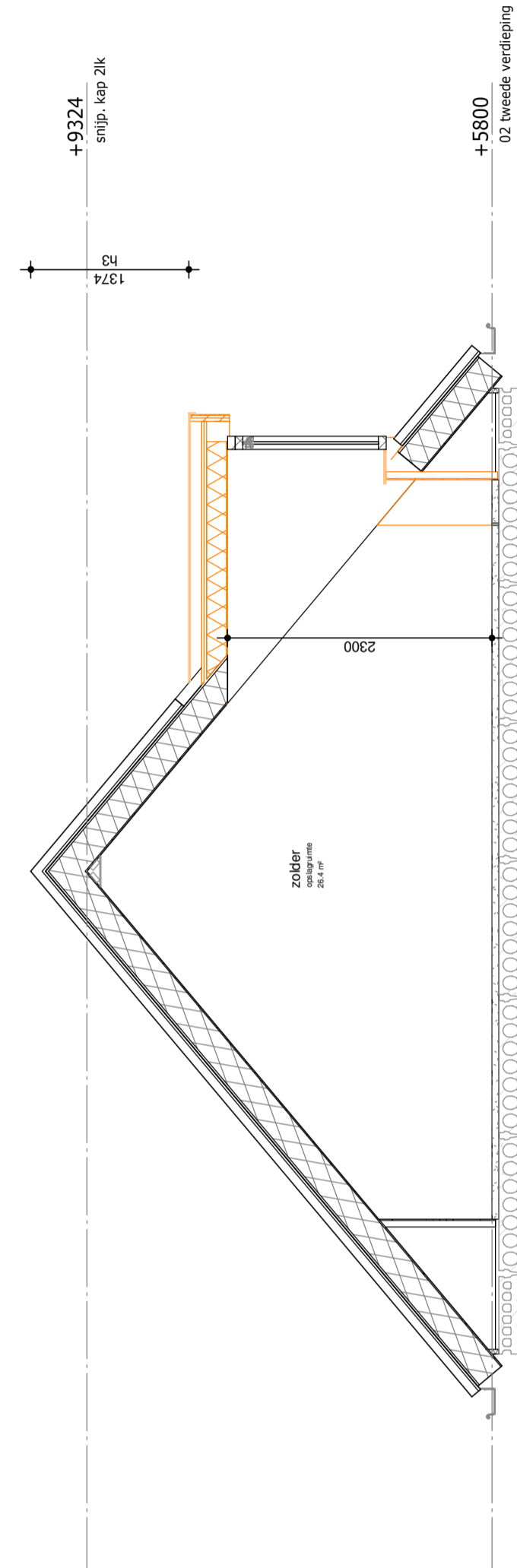
dakkapel type 02



dakkapel type 03

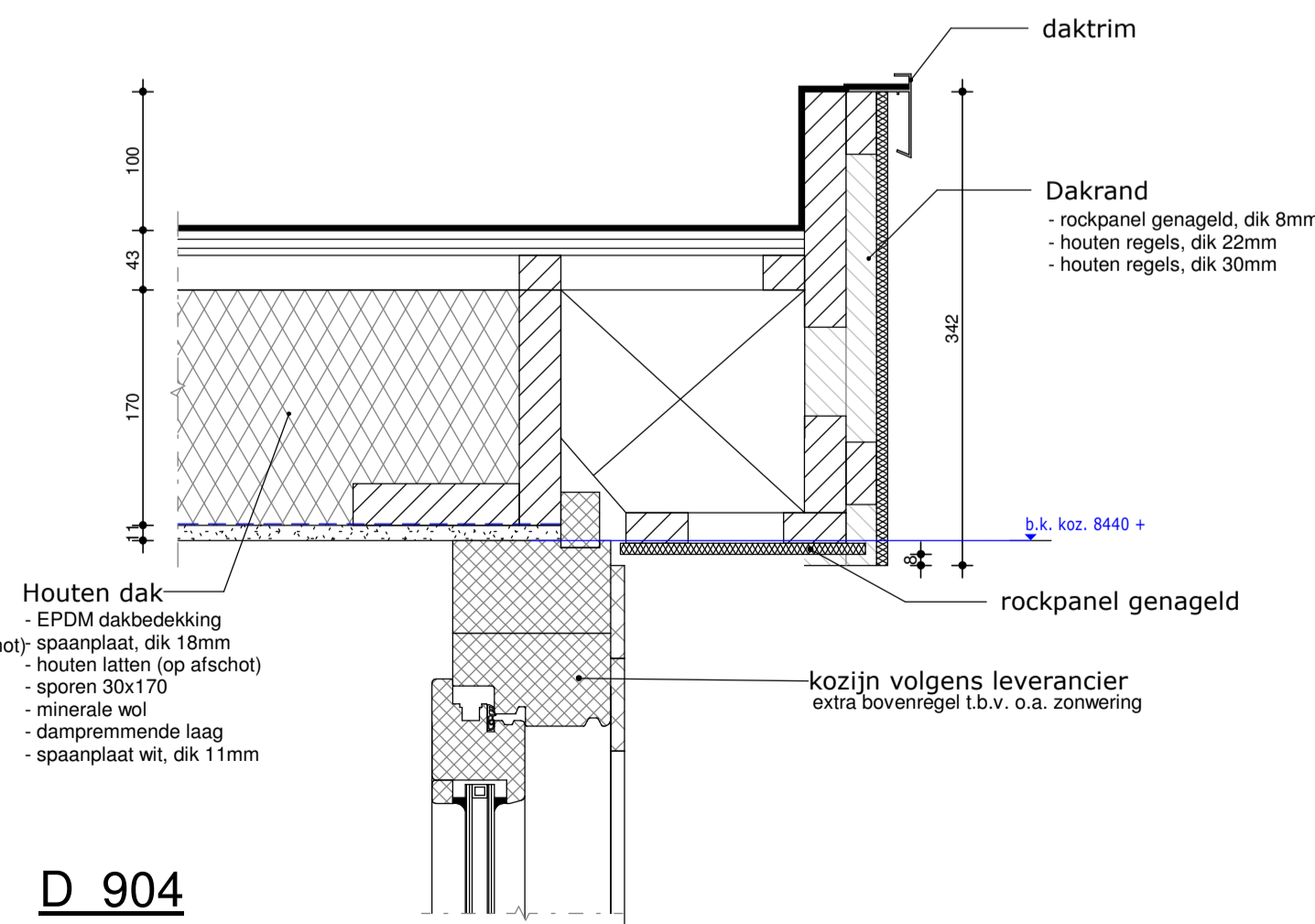
+9324
snijp. kap Zik

+5800
02 tweede verdieping



prefab scharnierkap, volgens leverancier en Ep-berekening

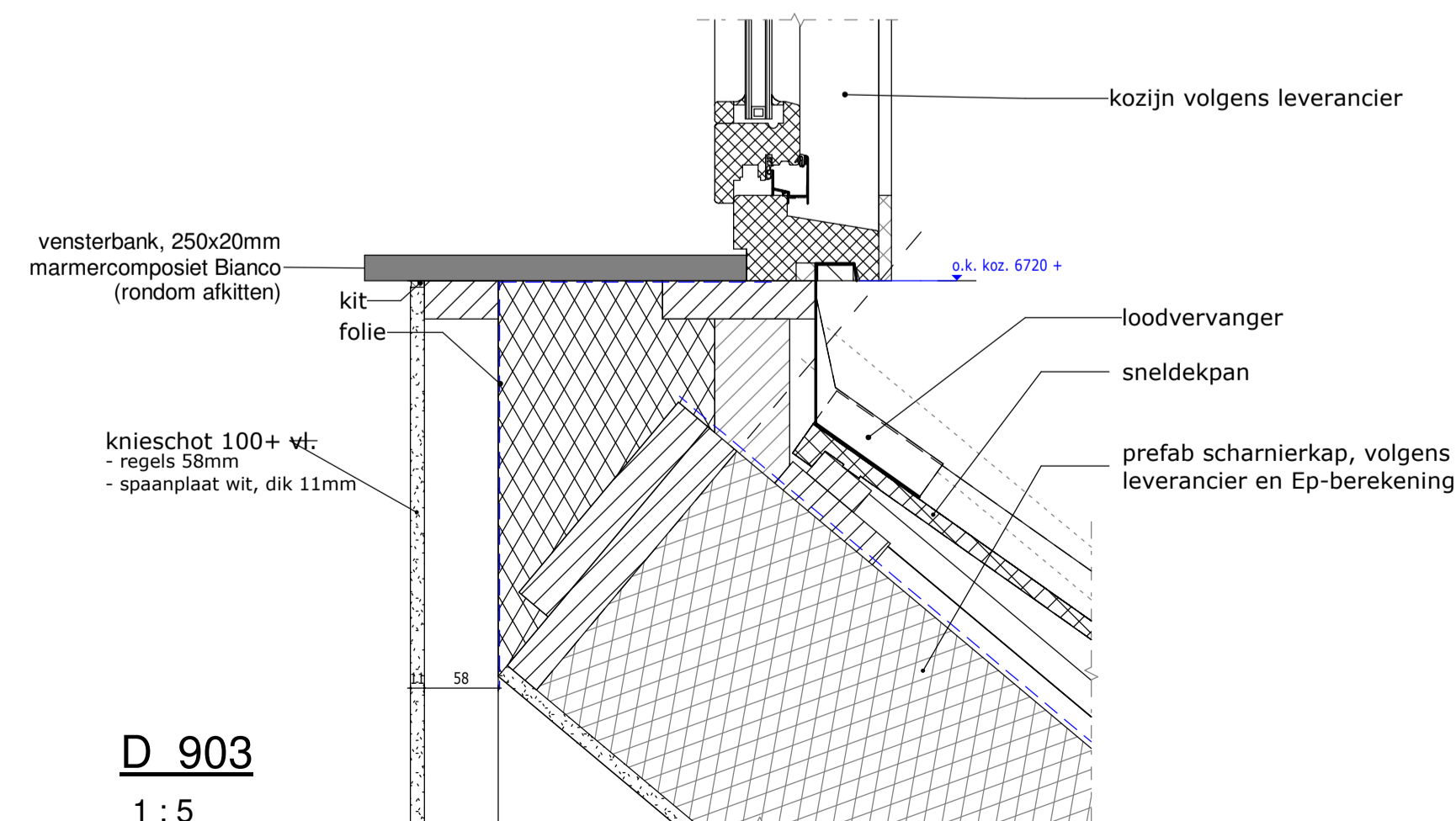
- dakpan (basis sneldek)
- panflaat 22x48mm
- tangels 19x32mm
- waterkerende folie
- sporen 30x245mm
- minerale wol
- dampremmende laag
- spaanplaat, dik 11mm (onbehandeld)



Houten dak

- EPDM dakbedekking
- spaanplaat, dik 18mm
- houten latten (op afschot)
- sporen 30x170
- minerale wol
- dampremmende laag
- spaanplaat, dik 11mm

D 904
1:5



knieschot 100+ vt

- regels 58mm
- spaanplaat wit, dik 11mm

D 903
1:5

D 905
1:5

Humblé Martens & Willems Architecten
www.humblemartenswillems.nl

Bedaux de Brouwer Architecten
www.bedauxdebrouwer.nl

Weusten Liedenbaum Architecten
www.weustenliedenbaum.nl

Rijwoning

Dakkapellen blad 2 (A1)

datum: 13-09-2019

wijziging:

getekend: WLA

Trebbe Wonen
Postbus 4
7500 AA Enschede

telefoon 088 259 00 00

tek.nr.:

BA/VK.320

schaal: 1:50/1:5

formaat: A1

